

Part list and component placement

Semiconductors	U1	GAL 16V8 (programmed)
	U2	GAL 20V8 (programmed)
	U3, U4	74 HCT 646
	U5	TL 7705
	D1	LED 5 mm green
Resistors	R1	330 Ω
	R2, R3	1 k Ω
	R4	10 k Ω
	RN1	SIL resistor array 4 \times 4.7 k Ω (5 pins)
	R5	47 k Ω
Capacitors	C1, C5...10	100 nF
	C2	47 μ F
	C11, C12	470 μ F
Miscellaneous	J1	40-pin header (straight or angled)
	J2	44-pin header (2.0 mm grid)
	J3	wire strap
	J4	8-pin header with 4 jumpers
	J5	4-pin header (angled)
	J7	40-pin IC socket adapter
	(U5)	8-pin milled DIP socket
	(U1)	20-pin milled DIP socket
	(U2, U3, U4)	24-pin milled DIP socket (CPU socket)
Mounting material	12 pieces	screws, nuts and distance rolls
RTC option	U7	RTC 72421
	D2, D3	Schottky diode
	C3	100 nF
	C4	1 μ F (tantalum, value differs from schematic)
	(U7)	18-pin milled DIP socket
	BT1	solderable lithium cell CR 2032 (3 V, 230 mAh)
Cable mounting option	J6	40-pin header
	(1)	40-pin IDC socket for cable clamp
	(1)	40-pin IC socket adapter for cable clamp
	(1)	40-pin flat cable (25 cm)

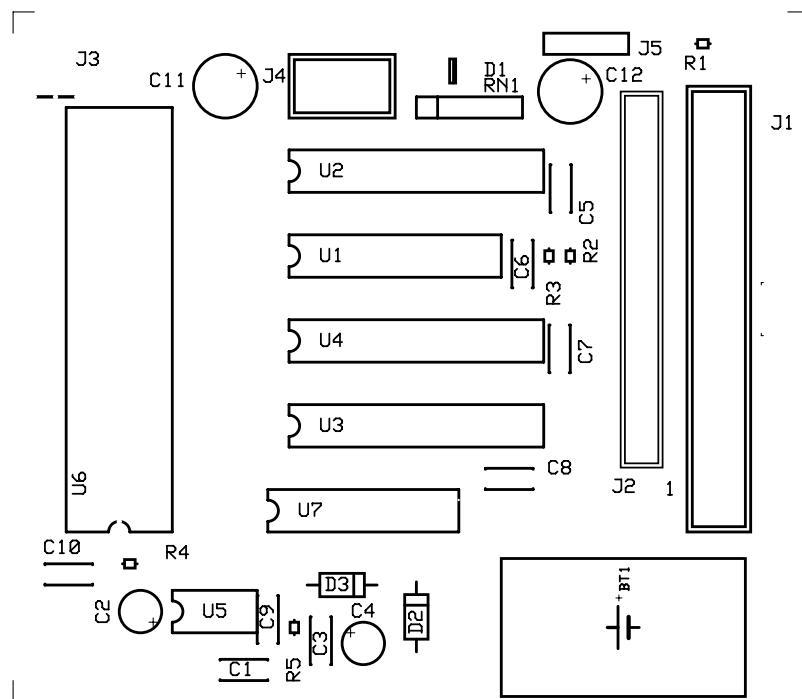


Figure 4: Component placement